

Bitumen thick coating

# PCI Pecimor® 1K

for external basement walls and foundations

# PCI®

Für Bau-Profis



CE certified.

## Fields of application


- For walls and floors.
- For indoor and outdoor use.
- Waterproofing to DIN 18533 W1-E: Waterproofing against soil moisture and non-standing seepage water on floor slabs and walls.
- As waterproofing measure to DIN 18533 W4-E splash water at a wall foundation.
- For waterproofing structures and structural members to DIN 18195 for load cases 4 and 5.
- As horizontal waterproofing under a load distribution layer for balconies and access balconies.
- For waterproofing structural members against water aggressive to concrete to DIN 4030.



Waterproofing structures in contact with the ground against soil moisture and non-standing seepage water.

## Features and benefits

- CE certified in accordance with EN 15814.
- Solvent free.
- Single component, ready to use without stirring.
- Good adhesion to dry and slightly moist substrates.
- Water impermeable, crack bridging.
- Resistant to ageing, durable protection even after years.

	
0432.0767	
PCI Augsburg GmbH Piccardstraße 11 D-86159 Augsburg	
13 DE0062/03	
PCI Pecimor 1K (DE0062/03) EN 15814:2011+A2:2014	
Polymer modified bituminous thick coatings used for the waterproofing of buildings EN 15814 CB2-W1-C1	
Reaction to fire	Class E/EI
Watertightness	W1
Crack-bridging ability	CB2
Water resistance	Pass
Flexibility at low temperature	Pass
Dimensional stability at high temperatures	Pass
Resistance to compression	C1
Durability	Pass



## Technical data

### Material

Material base	polymer bitumen emulsion with polystyrene filling
Colour	black
Density	approx. 0.65 g/cm <sup>3</sup>
Consistency	pasty
Storage	dry, frost free, no permanent storage over +30°C, full pallets are non-stackable
Shelf life	min. 12 months
Packaging size	10 l pail stock no. 6276/0 30 l pail stock no. 6275/3

### Application

Consumption				
The consumption of ready-to-use PCI Pecimor 1K amounts to approx. 1.0 litre/m <sup>2</sup> and mm wet layer thickness. The indicated layer thickness must not be exceeded by more than 50%.				
	wet layer thickness	dry layer thickness	consumption	10 l and/or 30 l pail cover
Water exposure class				
- DIN 18 533 W1-E (soil moisture and non-pressing water)	approx. 4 mm	≥ 3 mm	approx. 4.0 l/m <sup>2</sup>	approx. 2,5 m <sup>2</sup> and/or 7.5 m <sup>2</sup>
- DIN 18533 W4-E (splash water at a wall foundation)				
- DIN 18 531-5 waterproofing balconies and access balconies (usable platform not located above a room in use)	approx. 5 mm	≥ 4 mm (fabric membrane required)	approx. 5.0 l/m <sup>2</sup>	approx. 2 m <sup>2</sup> and/ or 6 m <sup>2</sup>
Processing temperature	+5°C to +30°C (substrate temperature)			
Substrate condition	dry to mat-damp			
Curing time* (at 4 mm wet layer thickness)	ready-to-use PCI Pecimor 1K			
- rainproof after	approx. 5 hours			
- curing time	approx. 4 days			
- can be exposed to water after	approx. 4 days			
Temperature resistance (after curing)	-20°C to +80°C			

\* At +23°C and 50% relative humidity. Higher temperatures reduce, lower temperatures increase the times given. Higher humidity increases the times given.

## Preparation of substrate

In case of waterproofing measures with PCI Pecimor 1K, the regulation DIN 18 533 and the "Regulation to plan and implement waterproofing measures of structural members in contact with the ground with polymer-modified bitumen thick coatings" issued by Deutsche Bauchemie e.V. (German building industry) must be followed. Suitable substrates are structurally sound concrete, at least strength class C 12/15, plaster of mortar group

C IV to EN 998-1, masonry to DIN 1053 made of brick, sand-lime brick, light-weight concrete and hollow concrete block, aerated concrete. The substrate must be structurally sound, mainly smooth and fine-pored in the surface. It must be free from honeycombs, voids, cracks and ridges, dust, tar, pitch, forming oil and other residues which could impair adhesion. The substrate should be dry or just slightly damp. Edges should be broken.

Covings (both horizontal and vertical) are to be rounded with PCI Polyfix Plus L, PCI Nanocret R2 or PCI Saniment DP, minimum radius 4 cm. In the case of brick-built basements, in particular if the building is of cavity construction, the top of the basement masonry not covered by the basement ceiling must be protected from penetrating water before carrying out the waterproofing measures. This can be done e.g. by trowelling with

## Preparation of substrate

PCI Barraseal or PCI Pecimor 1K after closing the openings in the head of the brickwork with cement mortar.

It occurs again and again in the case of brick-built basements that, during the carcass phase, the bottommost course of the masonry gets completely soaked with water collecting on the floor slab inside the basement. It is therefore required to apply an intermediate waterproofing layer with PCI Barraseal

or PCI Seccoral to prevent this inadmissible soaking: Apply PCI Barraseal to the transition area floor slab/basement wall before forming the coving. This flat coat must be applied from the front end of the floor slab over the coving up to at least the top edge of the first course of the masonry preventing water from acting on the reverse side onto the PCI Pecimor 1K coating. The levelling compound

PCI Nanocret R2 or a render coat of mortar group C IV can be applied to level irregularities and to close mortar gaps, spallings or open butt joints > 5 mm.

The material used to prepare the substrate (e.g. for coverings or intermediate waterproofing) must have completely cured before starting the waterproofing measures.

## Application procedure

**Always apply the coating to the side of the structure or structural member in contact with water!**

### 1 Priming

#### 1.1 On dry and damp masonry or plaster/render

Apply PCI Pecimor F, diluted 1 : 5 with water, to the substrate and allow to dry. No primer required on dust-free substrates.

#### 1.2 On concrete

Mix PCI Pecimor-Betongrund with water in a clean bucket, mixing ratio 1 : 9, and apply to the concrete substrate, prepared beforehand if required, using a trowel or spray gun. First coat of PCI Pecimor 1K must be applied wet on wet within 30 minutes, wet layer thickness approx. 2 mm.

### 2 Application

Two layers are always required. **Do not stir PCI Pecimor 1K!** Use directly from the pail.

Using a trowel, apply PCI Pecimor 1K in two layers fully covering the entire area. Apply the first coat to a layer thickness

of up to maximum half of the wet layer thickness which is required for the conditions exposed to, ensuring that the entire surface is covered. Allow the first coat to cure as long as necessary thus preventing it from being damaged by the second coat.

**2.1** The application of PCI Barraseal is required for the foundation area before applying PCI Pecimor 1K (see detailed drawing "Waterproofing of foundation area of single-leaf masonry").

**2.2** Install PCI Pecitape 250 over joints, e.g. separation joints between buildings, connections and areas susceptible to forming cracks. To do this apply approx. 2 mm of PCI Pecimor 1K to each side of the joint. Press PCI Pecitape 250 into the fresh coating (do not use any pointed or sharp-edged tools), fit it into the joint and apply PCI Pecimor 1K over the edge zone until the required layer thickness is achieved.

### 3 Protection

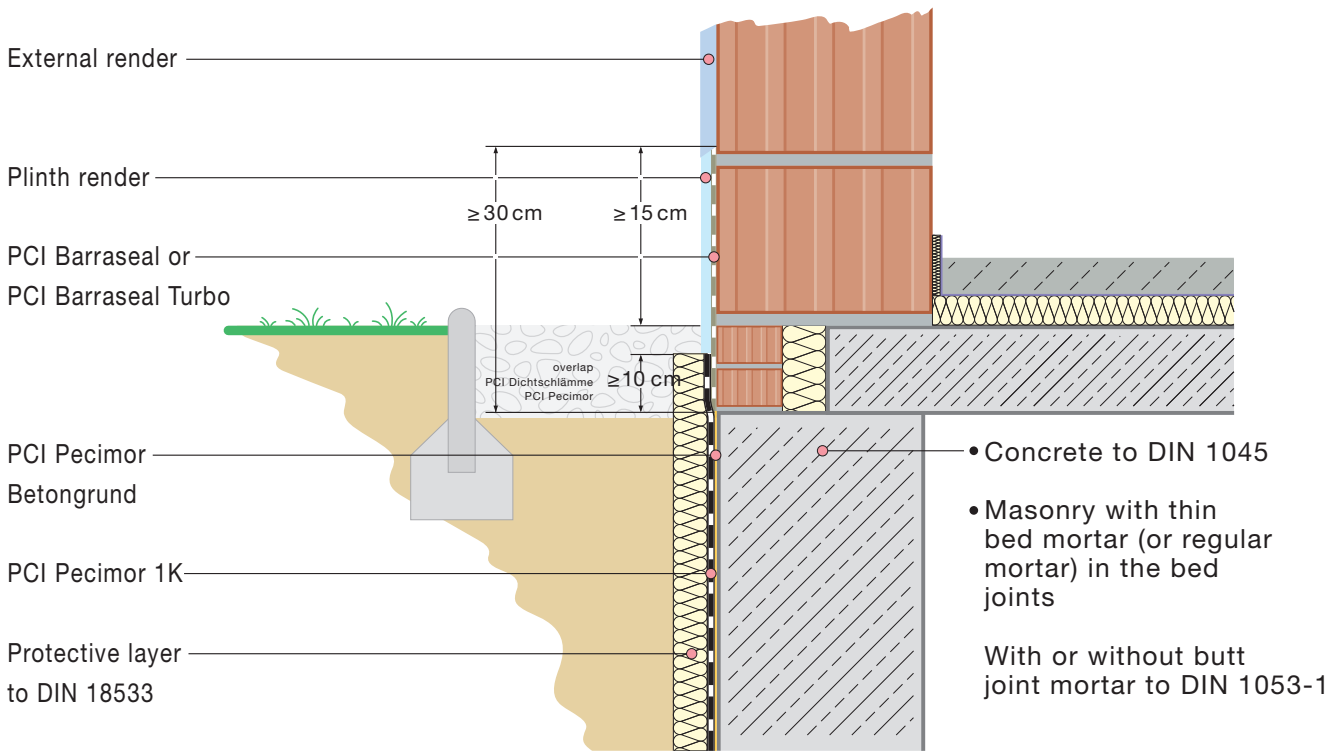
PCI Pecimor 1K areas must be protected from being damaged, e.g.

when backfilling the excavation pit, by positioning suitable drain boards. The excavation pit cannot be backfilled until the coating has sufficiently cured. Low temperatures and high humidity delay the curing process. Rubble, debris and coarse stones are not suitable as backfilling material. In case of horizontal surfaces, further layers such as screeds on an isolating layer etc. can be applied to the PCI Pecimor 1K coating after approx. 5 days.

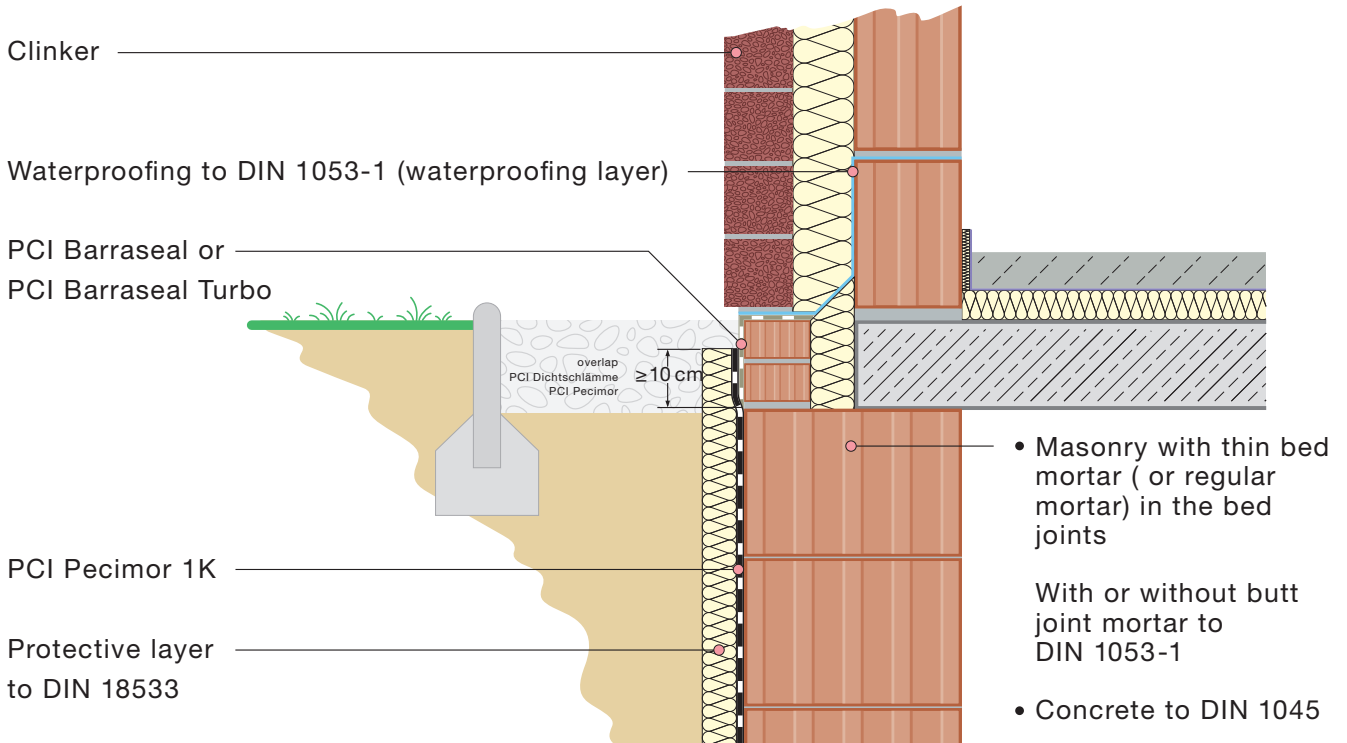
### 4 Perimeter insulation

Insulation boards or drainage boards (e.g. Styrodur, FINA-X a.o.) can be fastened to the cured PCI Pecimor 1K coating by applying PCI Pecimor DK in the dot and dab method. Use PCI Pecimor DK when the insulation boards or drainage boards must be full-surface glued. Areas which have not completely cured are not allowed to be exposed to water.

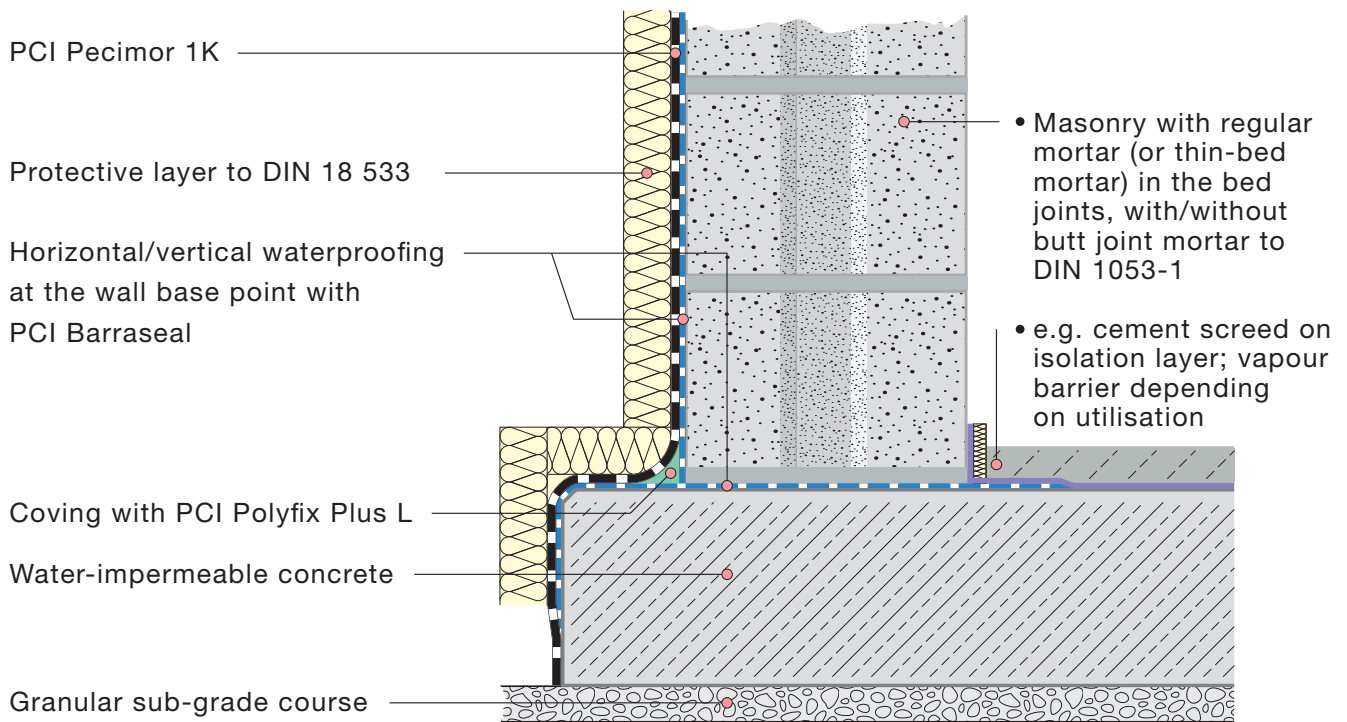
**Waterproofing foundation area of single-leaf masonry**



**Waterproofing foundation area of cavity walls**



## Waterproofing base point of masonry, floor slab made of water-impermeable concrete



### Please note

- **Do not stir PCI Pecimor 1K!**  
Apply directly from the pail.
- Full pallets are non-stackable.
- Use PCI Pecimor 2K for substrates with old bituminous coatings.
- Do not use PCI Pecimor 1K at substrate temperatures below +5°C or above +30°C.
- PCI Pecimor 1K is not suitable for potable water application and for waterproofing the inside of swimming pools.
- Moisture acting on the reverse side of the coating, e.g. in case of soaked masonry, is not allowed.
- Protective coatings must not be applied to the finished coating until the bitumen coating has completely cured.
- In case of application of PCI Pecimor 1K to DIN 18 533 in water exposure class W3-E, the fabric membrane PCI Gewebbahn must be integrated in the first layer of PCI Pecimor 1K overlapping by 10 cm.
- Lumped loads and line loads as well as loads affecting the functionality of the waterproofing measures by being indented should be prevented.
- Damages might occur if the coating has not completely cured and is exposed to driving rain.
- In the case of extreme heat, we recommend to carry out the waterproofing measures in the evening hours or to shadow the construction.
- Avoid direct contact with joint sealants.
- Do not backfill excavation pits with rubble, debris or coarse stones. The coating might get damaged.
- Excavation pits with non-cohesive ground should be backfilled and compacted in layers to prevent settlements to the greatest possible extent.
- Clean tools with plenty of water immediately after use; the cured product can only be removed by mechanical scraping.

### Declaration of Performance

The Declaration of Performance can be downloaded as pdf file under [www.pci-augsburg.eu/dop](http://www.pci-augsburg.eu/dop).

## Information on the safe use

### ■ PCI Pecimor 1K

Treated goods in accordance with regulation (EU) No 528/2012:  
Contains biocide (in-can preservative)  
N,N'-Methylene-bis-morpholine.

Keep out of reach of children. Wear protective gloves. Protect eyes where there is risk from splashing. In case of contact with eyes thoroughly rinse with water. If the irritation of the eyes

does not ease off within a few minutes seek prompt medical advice.

Giscode BBP 10

*For further information: see PCI Material Safety Data Sheet.*

## Supplementary products

### PCI Pecimor F

5 l pail, stock no. 1242/0  
10 l pail, stock no. 1241/3  
33 l pail, stock no. 1240/6

### PCI Pecimor-Betongrund

1 kg pail, stock no. 2180/4

### PCI Pectape 250

20 m roll, stock no. 3962/5

### PCI Pecimor 2K

30 l pail, stock no. 1262/8

### PCI Pecimor DK

28 kg pail, stock no. 1264/2

## Disposal of emptied PCI sales packaging

PCI participates in an area-wide waste disposal system for sales packaging completely emptied. DSD – Duales System Deutschland (Dual System Germany, contract number 1357509) is

our partner for waste disposal. PCI sales packaging completely emptied can be disposed of via DSD in accordance with the symbol printed on the packaging.

## Services for architects and designers

Consultations at the workplace, supplementary information, testing certificates and sample descriptions can

be requested from professional advisors and at the company headquarters.



### PCI Augsburg GmbH

Piccardstr. 11  
86159 Augsburg  
P.O.B. 10 22 47  
86012 Augsburg  
Germany  
Tel. +49 (821) 59 01-0  
Fax +49 (821) 59 01-372  
www.pci-augsburg.de



zertifiziertes Qualitätsmanagementssystem

In view of widely varying site conditions and fields of application of our products this technical data sheet is meant to provide general application guidelines only. This information is based on our present knowledge and experience. The customer is not released from the obligation to conduct careful testing of suitability and possible application for the intended use. The customer is obliged to contact the technical help-line for fields of application not expressly stated in the technical data sheet under "Fields of Application". Use of the product beyond the fields of application as stated in the technical data sheet without previous consultation with PCI and possible resulting damages are in the sole responsibility of the customer. All descriptions,

drawings, photographs, data, ratios, weights a.o. stated herein can be changed without advance notice and do not represent the condition of the product as stipulated by contract. It is the sole responsibility of the recipient of our products to observe possible proprietary rights as well as existing laws and provisions. The reference of trade names of other companies is no recommendation and does not exclude the use of products of similar type. Our information only describe the quality of our products and services and are no warranty. Liability is accepted for incomplete or incorrect particulars in our data sheets only in the event of intent or gross negligence, without prejudice to claims under product liability laws. All transactions are subject to our Terms of Sale and Supply.

Technical Data Sheet No. 311 (July 2017), Any subsequent publication supersedes this edition.

German edition July 2017; the latest edition is always available on the Internet under [www.pci-augsburg.de](http://www.pci-augsburg.de)