

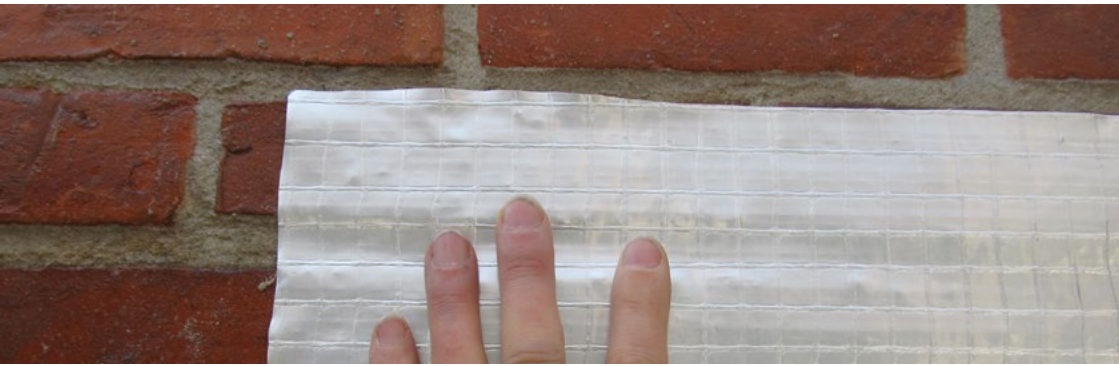
Cruysberghs
bvba
Chemical

Producer of construction specialty chemicals **REAXYL**[®]

Approved BASF Construction Chemicals partner



Dealer of PCI tile adhesive systems and construction chemical additives



Reaxyl[®] Benfoil 31

5 layered vapour and air tight building foil for energy neutral and passive construction



Cruysberghs Chemical bvba, Heppensesteenweg 56, B- 3945 Ham
Tel.: +32 11 72 71 66 Fax : +32 11 72 71 51
info@cruysberghs.be - www.cruysberghs.be

REAXYL® Benfoil 31

Description

Reaxyl® Benfoil 31 is a 100% vapour tight construction foil for seamlessly finishing every continuous building element, to get a complete air and vapour tight construction.

Application

Reaxyl® Benfoil 31 has a curative and durable preventive function.

The 5 layers, LDPE / welded mesh / aluminum / coating, make a very strong material that can be applied around the building.

Reaxyl® Benfoil 31 protects the complete building against internal condensation because of differential vapour pressure in every room.

Reaxyl® Benfoil 31 is a 5 layered laminated vapour and water tight foil, for floors, roofs, facades, cellars, crawl spaces, wells, swimming pools, saunas, showers, etc.

Qualities

Reaxyl® Benfoil 31 is applied as a complete vapour tight foil in floor, wall and roof constructions, on the warm side of a pitched or a flat roof and façade elements.

Reaxyl® Benfoil 31 is applied to the side with the highest vapour pressure, also in crawl spaces or cellars. Because of the exceptional vapour tight qualities **Reaxyl® Benfoil 31** is extremely suitable for construction of buildings which belong to climate category 4 like bathrooms, swimming pools, sport facilities, saunas, laundry rooms, and such.

Reaxyl® Benfoil 31 is insensitive to alkaline influences because of its coating therefor it can easily be reduced with concrete holding coatings.

Apply – Surface:

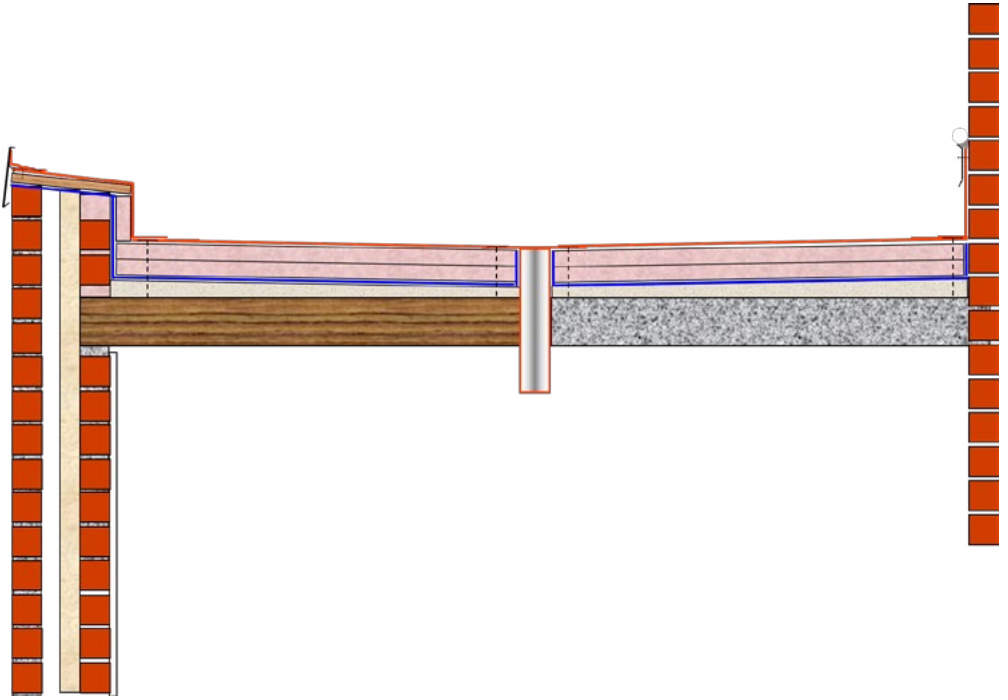
Reaxyl® Benfoil 31 can be applied on a soft and a hard surface.

Slippery surfaces are to be glued with **Reaxyl® Foliad** beforehand. **Reaxyl® Foliad** makes every surface self-adhesive. Apply **Reaxyl® Benfoil 31** with the shiny side on the inside, on the dry but self-adhesive, previous applied glue layer **Reaxyl® Foliad**. Depending on the weather let the **Reaxyl® Foliad** dry for some minutes, hours or days. Do not use **Reaxyl® Foliad** with temperatures below +5°C and in wet, moist rooms.

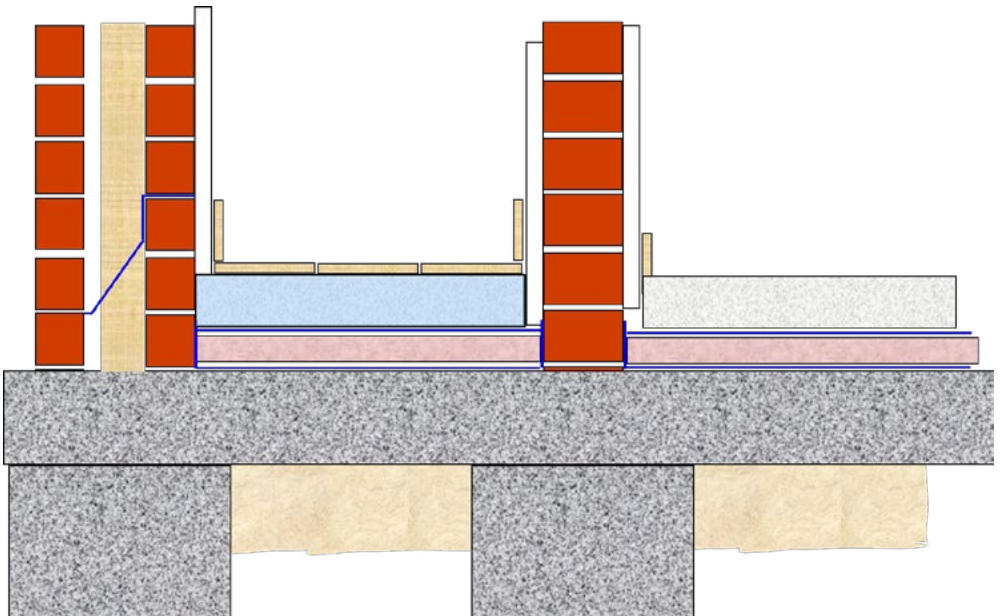
Rough surfaces are to be glued linear every 20 cm with **Reaxyl® ZX-345** and apply **Reaxyl® Benfoil 31** immediately. **Reaxyl® ZX-345** can be applied to absorbing or non or little absorbing surfaces like bricks, old concrete, fresh concrete, plasterboard, aerated concrete, gas concrete, old walls, new walls, OSB boards, wooden beams, metal beams, etc. Also use **Reaxyl® ZX-345** in moist, cold rooms like in wet crawl spaces to glue **Reaxyl® Benfoil 31**.

Overlap:

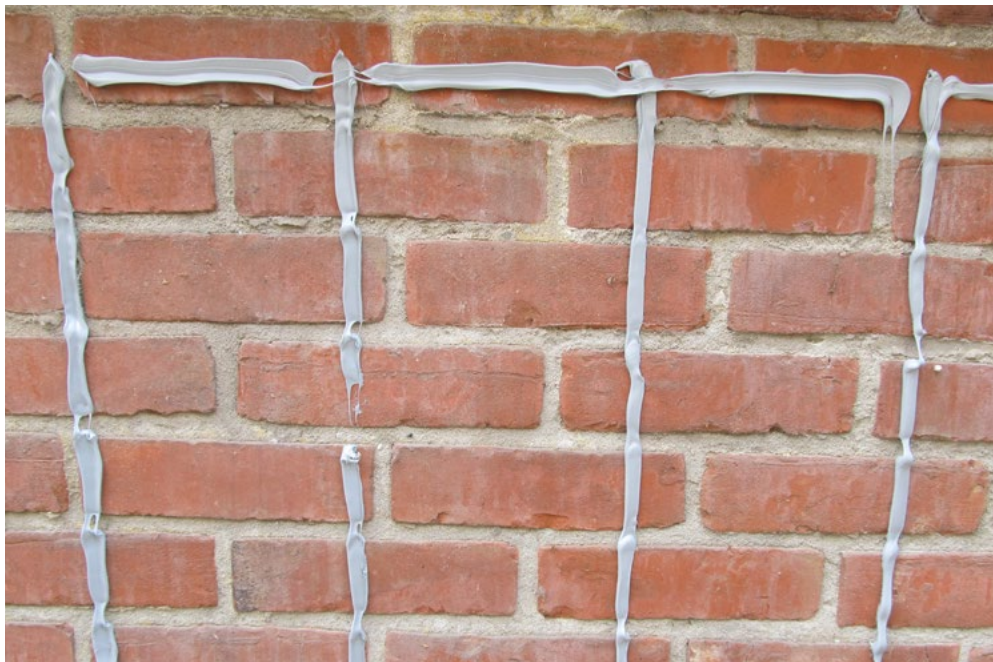
Always apply **Reaxyl® Benfoil 31** overlapping every 5 – 10cm. Glue the overlaps on one side with **Reaxyl® Foliad**. Let the glue layer dry completely before pressing down. The average drying time of the **Reaxyl® Foliad** is 15 minutes by 20°C.



Reaxyl® Benfoil 31 applied to a flat roof renovation.
Motion joints and ducts are to be sealed with Tubefix®.



Reaxyl® Benfoil 31 applied to floor renovation.



Rough surfaces are to be glued with Reaxyl® ZX-345 brick slip glue.



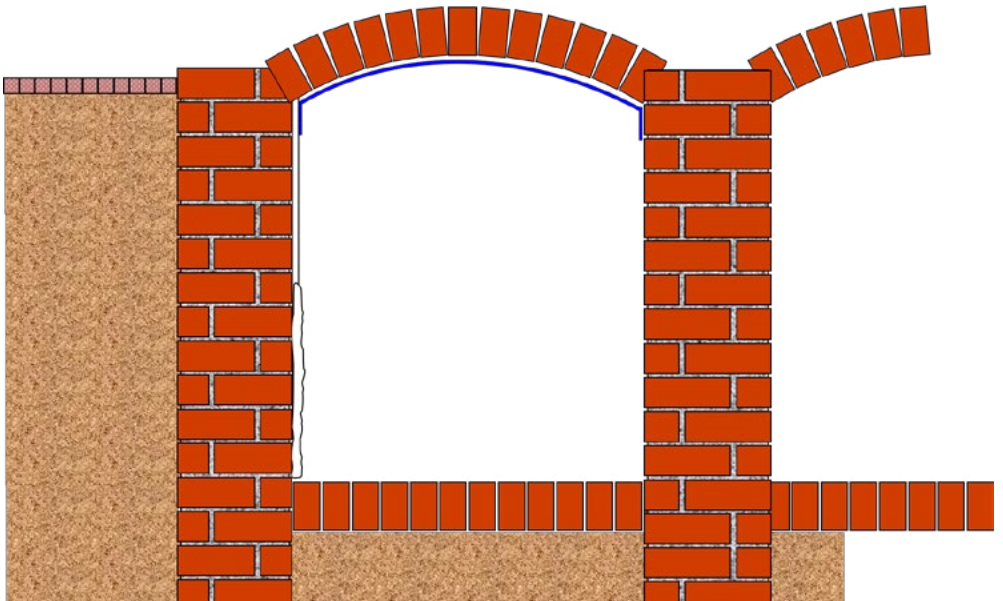
Overlap seams and joints 5 – 10 cm with Reaxyl® Foliad.



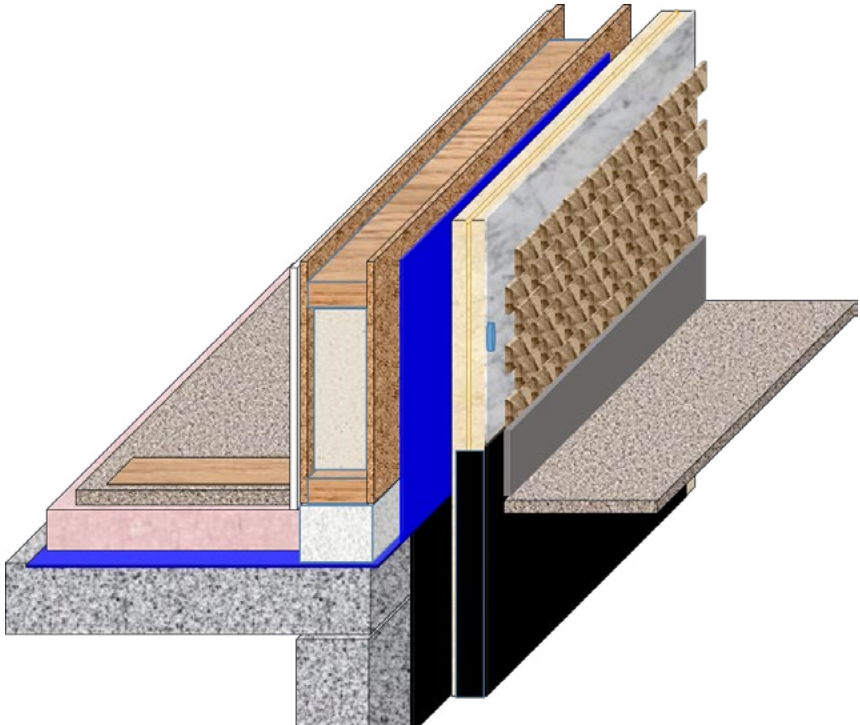
Press the Reaxyl® Benfoil 31 in the fresh Reaxyl® ZX-345 brick slip glue.



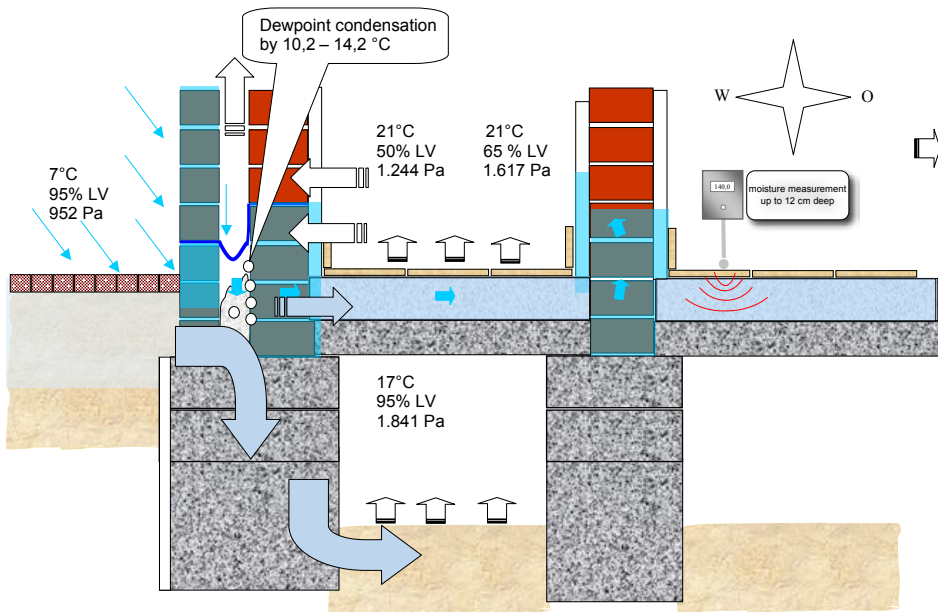
Connect pipes, ducts, motion joints with Tubefix®.



Reaxyl® Benfoil 31 applied as a vapour barrier in old vaulted cellars.



Reaxyl® Benfoil 31 applied as vapour barrier in wood frame construction.



Read why you have to build vapour tight in the manual on www.humida.be

Technical information

REAXYL® Benfoil 31

View:	Aluminum
Material base:	5 layers: LDPE / welded mesh / aluminum / coating
Weight:	125 gr/cm ²
Vapour diffusion resistance:	μ d > 300
Material thickness:	0,31 mm on the welded mesh 0,11 mm between the welded mesh
Fire class:	F
Yield strength longitudinal direction:	255 N / 50 mm
Yield strength transverse direction:	155 N / 50 mm
Temperature resistance:	15 %
Temperatuur bestendigheid:	-40 / + 80°C
UV-resistance:	6 months
Warmth resistance:	0,006 m ² K/W
Processing temperature:	+ 12 to + 30 °C.
Glue with:	Reaxyl® Foliad or Reaxyl Tubefix®
Clean after drying:	Reaxyl® ZX-cleaner
Package:	50 meter x 1,5 m Rol Ø 18 cm, 10 kg
Storage:	cool and dry



Solutions for all your construction problems

webshop

www.cruysbergghs.com



Cruysbergghs

bvba

Chemical

Cruysbergghs Chemical bvba
Heppensesteenweg 56
3945 Ham - Belgium
Tel: +32 11 72 71 66
Fax: +32 11 72 71 51
E-mail: info@cruysbergghs.be
Website: www.cruysbergghs.be

© 2018 Cruysbergghs Chemical bvba - All rights reserved. All images are property of Cruysbergghs Chemical bvba. The logos of BASF and PCI are property of BASF Chemical Company. All information distributed through this document is for information purposes only, without adverse recognition, nor any other warranty than those resulting from the sale of our products, within the bounds of our terms and conditions. Users must always consult our last published technical data sheets; a copy of which is available upon request. The information indicated above is the result of a thorough study, previous data are hereby invalid. Test this product yourself and test whether it is satisfactory for your goals. We are not responsible for any misuse of our products or damage, nor do we guarantee if our products were not suitable for your particular purposes. Nobody has the right to give guarantees or guidelines in our name about this product, that are beyond the contents of this information sheet.