



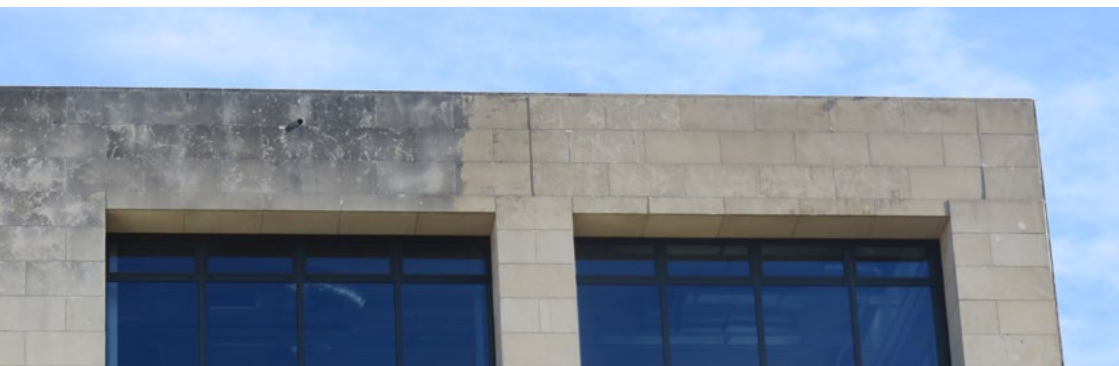
Cruysberghs
bvba
Chemical

Producer of construction specialty chemicals **REAXYL**[®]

Approved BASF Construction Chemicals partner



Dealer of PCI tile adhesive systems and construction chemical additives



Reaxyl[®] Natri 1216

Façade cleaner

Moss remover

Germicidal

Cruysberghs Chemical bvba, Heppensesteenweg 56, B- 3945 Ham
Tel.: +32 11 72 71 66 Fax.: +32 11 72 71 51
info@cruysberghs.be - www.cruysberghs.be

REAXYL® Natri 1216

Use:

With **Reaxyl® Natri 1216** you can simply remove moss, algae and micro-algae off natural stones, bricks, outer plaster, roofs and concrete.

Instructions:

Apply **Reaxyl® Natri 1216** undiluted onto the polluted surfaces with a **Reaxyl®** Block brush, product roll, radiator brush or a low pressure sprayer.

Let penetrate for some hours or days.

If necessary, repeat the treatment.

Cover plants.

Reaxyl® Natri 1216 does not harm glass or aluminum.

Wear protective clothing and work with the wind.

Only for professional use!

Read the safety precautions carefully!



Protection:

The cleaned facades can best, after drying time, be waterproofed with Reaxyl® CE-27 (W) or CE-35 (W) to limit the moisture content. Hereby a repetition of the cleaning can be postponed for a long time.

Shadow sides or wooded sides will be green faster, without the treatment.

The logo for REAXYL features a stylized blue square icon to the left of the brand name 'REAXYL' in a bold, black, sans-serif font. A registered trademark symbol (®) is positioned at the top right of the 'L'.

Technical information

Material base: Natrium hypochlorite 12-16% Cl active

UN 1791 natrium hypochlorite solution, 8, II, (E)

Cas-nr : 7681.52.3

H200 "Can be corrosive for metals."

H314 "Causes serious burns."

H400 "Very toxic to in water living organisms."

EUH031 "Forms toxic gas in contact with acids."

P260 "Do not breath in dust / smoke / mist / vapour / spraying mist."

P273 "Prevent dumping in the environment."

P280 "Wear protective gloves / protective clothing / eye protection / face protection."

P303 + P361 + P353 "By contact with the skin (or hair): remove contaminated clothing immediately – rinse/shower the skin with water."

P305 + P351 + P338 "By contact with the eyes: carefully rinse with water during a few minutes; remove contact lenses, in possible, keep rinsing."

P310 "Immediately consult Regional Poison Control (Belgium 070/245.245, The Netherlands 030/274.88.88) or a doctor."

P403 + P233 "Keep on a well ventilated place. Keep in a well closed packaging." Jerrycan with throttle cap: please keep the can straight. Do not tip over. Do not use empty cans for other purposes.

Package: 30kg

Solutions for all your construction problems

webshop

www.cruysbergghs.com



Cruysbergghs

bvba

Chemical

Cruysbergghs Chemical bvba
Heppensesteenweg 56
3945 Ham - Belgium
Tel: +32 11 72 71 66
Fax: +32 11 72 71 51
E-mail: info@cruysbergghs.be
Website: www.cruysbergghs.be

© 2018 Cruysbergghs Chemical bvba - All rights reserved. All images are property of Cruysbergghs Chemical bvba. The logos of BASF and PCI are property of BASF Chemical Company. All information distributed through this document is for information purposes only, without adverse recognition, nor any other warranty than those resulting from the sale of our products, within the bounds of our terms and conditions. Users must always consult our last published technical data sheets; a copy of which is available upon request. The information indicated above is the result of a thorough study, previous data are hereby invalid. Test this product yourself and test whether it is satisfactory for your goals. We are not responsible for any misuse of our products or damage, nor do we guarantee if our products were not suitable for your particular purposes. Nobody has the right to give guarantees or guidelines in our name about this product, that are beyond the contents of this information sheet.