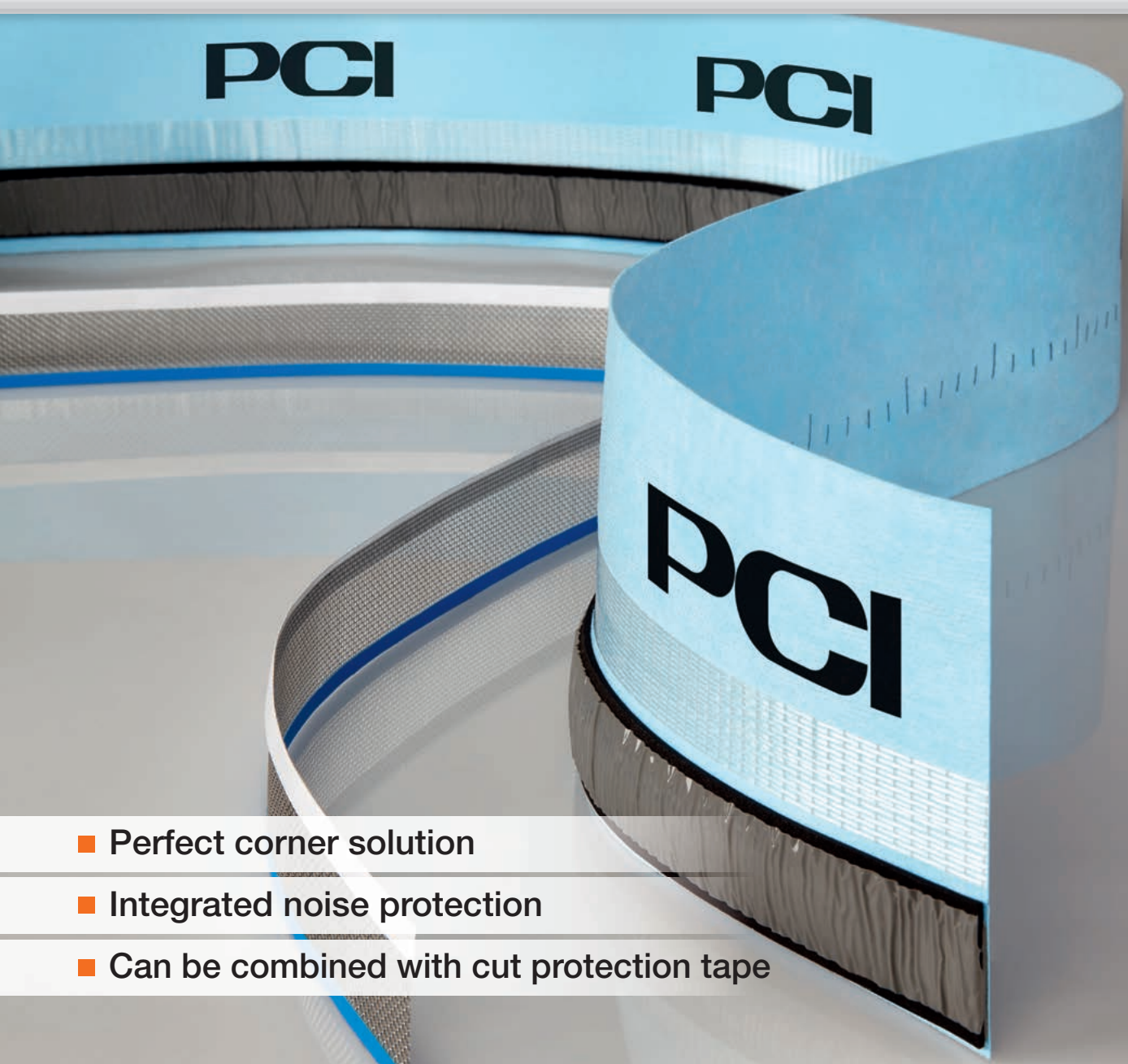


Reliable sealing with PCI

PCI Pecitape[®] WDB – the new bathtub sealing tape



- Perfect corner solution
- Integrated noise protection
- Can be combined with cut protection tape

Reliable sealing – right down to the last detail

DIN 18534 pays special attention to the waterproofing of bathtubs and showers. Silicone joints are no longer adequate and the logical solution is a bathtub sealing tape.

The new bathtub sealing tape PCI Pecitape® WDB provides effective, durable protection against moisture for silicone joints and offers additional benefits: the 5-millimetre-thick acoustic insulation strip ensures effective noise protection.

Especially reliable protection under the silicone joint is provided by the stainless steel reinforced product PCI Pecitape® Protect. If the elastic sealant is cut out during maintenance work, the PCI Pecitape® WDB bathtub sealing tape then remains intact.



Go directly to the
installation video
using the QR code.



Thin, flexible PCI Pecitape® WDB can be applied between the bathtub and the wall in only a few steps and then integrated in the waterproofing layer.

PCI Pecitape® WDB

Acoustically insulating bathtub sealing tape for bathtubs and showers

- For sealing the edges of showers and bathtubs to walls
- Provides a durably reliable moisture barrier under the silicone joint
- With acoustic insulation strip for effective noise protection
- Highly flexible, easy to install and reliable
- Can also be combined with PCI Pecitape® Protect cut protection tape



PCI Pecitape® Protect cut protection tape provides reliable protection under expansion joints.

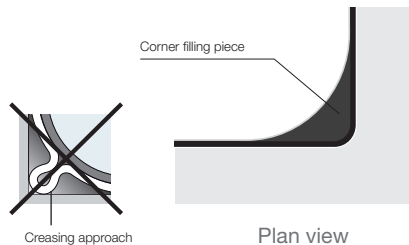
PCI Pecitape® Protect

Cut protection tape with stainless steel reinforcement
for all elastic sealants

- Prevents the destruction of the waterproofing when cutting out elastic sealants
- Suitable for all types of expansion joints
- No risk of personal injury or damage to the waterproofing as the stainless steel fabric is surrounded by a high-performance adhesive tape
- Self-adhesive strip for secure bonding to wall/wall and wall/floor junctions



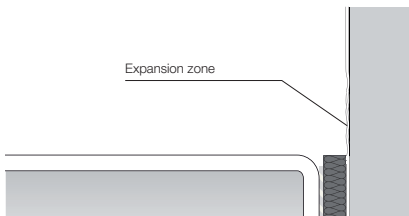
Five good reasons for using PCI Pecitape® WDB



1

The perfect corner solution

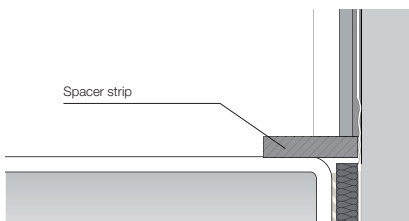
PCI Pecitape® WDB is supplied with corner filling pieces. This means that the bathtub sealing tape can provide a reliable seal even in corners which are difficult to reach, without untidy squeezing or creasing, and without cutting the tape at the corners. Just use the corner filling pieces (if necessary), guide the tape around the corner and press it into place.



2

The flexible expansion zone

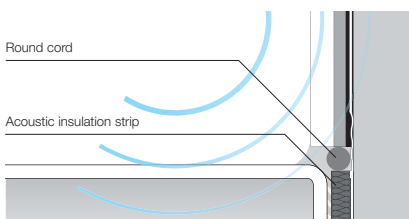
Thanks to the flexible sealing tape, PCI Pecitape® WDB also provides an effective seal if the bathtub settles following installation. The tape absorbs the movement and ensures that it is not torn away from the bathtub or wall. A 2 cm PVC protective strip prevents tile adhesives from bonding in this area and ensures that the flexible expansion zone remains intact.



3

The easy-to-install spacer tape

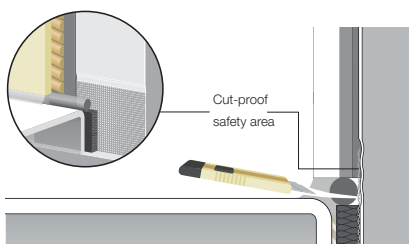
A 4 mm self-adhesive foam spacer tape is supplied with the product to ensure a professional, straight silicone joint without any noise passages, fouling or mortar residue. After the tiles have been laid, the spacer strip can simply be removed.



4

The effective acoustic insulation strip

People create noise when using a shower or bath. The 5 mm acoustic insulation strip effectively prevents noise from being transmitted to the surrounding walls.



5

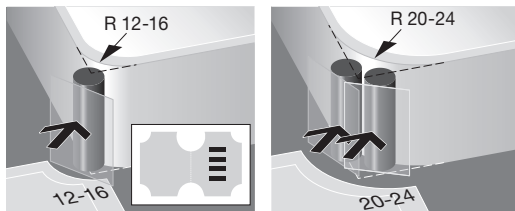
The cut-proof safety area

In combination with PCI Pecitape® Protect, PCI Pecitape® WDB also ensures effective, durable protection if the silicone joint is cut out. The destruction of the waterproofing layer is effectively prevented.

Easy installation with corner filling pieces

In only four steps

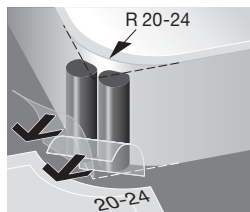
PCI Pecitape® WDB is reliable, can be installed quickly and saves time – even at difficult points. The flexible butyl filling pieces supplied with the tape can be fitted perfectly to the outside corners of showers and bathtubs and shaped as required.



1

Measure the radius of the bathtub

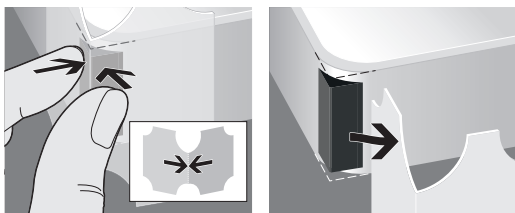
Measure the radius of the corner using the template and insert the appropriate corner filling pieces required for the radius.



2

Remove the backing foil

Remove the protective foil from the corner filling pieces.



3

Modelling

Use the coated radius template to model the corner filling pieces and to obtain the right-angled shape required.



4

Press the bathtub sealing tape into place

View from below: press the bathtub sealing tape firmly into the corner using your finger and thumb. Then shape a tidy right-angled outside corner.

PCI Pecitape® Protect in detail

PCI Pecitape® Protect not only protects PCI Pecitape® WDB if the silicone joint above the tape is cut out but can also be used as a cut protection tape under all elastic sealants.

Self-adhesive strip



Facilitates fixing to wall and floor.

Protective strip



The blue protective strip protects the craftsman from injury and the waterproofing layer from damage during installation.

Cut protection tape



Prevents damage to the waterproofing layer when elastic sealants are cut out.

A wide variety of applications



With bathtub protection tape...



... on the floor over expansion joints.



At wall/wall junctions...



... and wall/floor junctions.

Included in package



PCI Pecitape® WDB

Set with:

- 2.00 m roll, ordering no. 1253
- 2.60 m roll, ordering no. 1254
- 3.60 m roll, ordering no. 1255

Included in set:

- Acoustically insulating bathtub sealing tape
- Cleaning and drying cloth
- Corner filling pieces
- Scissors
- Roller
- Round cord
- Spacer tape

PCI Pecitape® Protect

Set with:

- 10 m roll, ordering no. 1259
- 20 m roll, ordering no. 1260
- Width in each case 3 cm





PCI Augsburg GmbH

Piccardstr. 11 · D - 86159 Augsburg

P.O.B. 10 22 47 · D - 86012 Augsburg

Germany

Phone +49 (8 21) 59 01-0

Fax +49 (8 21) 59 01-459

www.pci-augsburg.de

2622/117/0/EN SaWe

A brand of



We create chemistry