

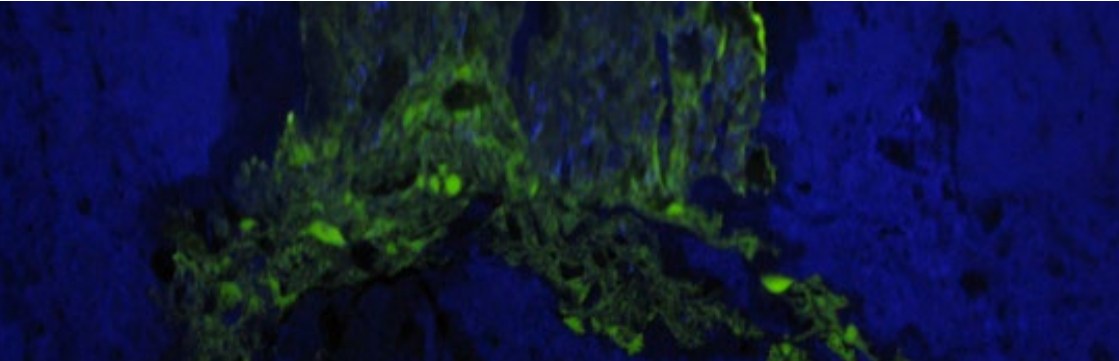
**Cruysberghs**  
bvba  
Chemical

Producer of construction  
specialty chemicals **REAXYL**<sup>®</sup>

Approved BASF Construction  
Chemicals partner



Dealer of PCI tile adhesive systems and  
construction chemical additives



## Reaxyl<sup>®</sup> Fluorescent leak-detection

**3 x 250 ml dye**

**1 x UV-Led flashlight, incl. batteries**

**Forensic extension set = incl. special lens and  
adapter, needle, syringe, hose.**



Cruysberghs Chemical bvba, Heppensesteenweg 56, B- 3945 Ham  
Tel.: +32 11 72 71 66 Fax.: +32 11 72 71 51  
info@cruysberghs.be - www.cruysberghs.be

## Instructions

Suitable for: roof gardens, flat roofs, terraces, balconies, drains, joints, cavity walls, window frames, etc. Can also be used as check for certain people who do not have access to a room or goods.

### How to use:

Make a schematic division of presumable place(s) of the cause of the leak.

Choose 1 colour per compartment (mark this on the scheme). Pour 1/10 of the concentrated fluorescent dye in 1,5 litre water (on places where you cannot see the colour residue, you can add less dye).

Shake well before applying the fluorescent dye solution.

Pour the solved mixture in the presumed drains, gutters, compartmentalized zones, cavity walls, etc. In cracks, gaps and tears it can be appropriate to use the include dosing syringe with the needle or hose (see page 4). Wait until the water has run to the place of the leak (this can be after a rain shower or after some days or weeks). You can possibly expedite this by adding water through a hose, fire hose or a bucket.

Place the batteries in the flashlight and go look in the dark at the place of the leak (distance 20-200 cm). Do not forget to remove the batteries after use.

The fluorescent colour you find there, matches the colour on the place of the source of the leak (see the scheme you have made).

Perhaps do a second test in the suspicious zone which you again compartmentalize into smaller zones.



### Fluorescence dye:

To be diluted with water 1/10 – 1/100 before application.

Shake well before use.

Environmentally friendly – harmless.

Keep frost-free.

Can leave colour traces on porous surfaces (can be rinsed out with water in most cases).

### Flashlight:

Makes the leaks visible because of fluorescence in the dark, only to be used with fluorescent dye.

Do not look too long into the light.

### Liability:

We do not have any liability for any possible stains or wrongly use of these products. For tough surfaces you can best do a test on a little visible place. Most of the stains can be rinsed out with water. Further we refer to our terms and conditions and warranties.



**REAXYL®**



Apply the with water diluted fluorescent dye under the roofing with the help of the included dosing needle.



Apply the with water diluted fluorescent dye between fine gaps or in cracks with the help of the included dosing needle.



Apply the with water diluted fluorescent dye between fine gaps, in cracks or window frames with the help of the included dosing hose.



Apply the with water diluted fluorescent dye between fine gaps, in cracks or joints with the help of the included dosing hose.



***„Reveal the source in the dark!”***



### **Damage by third parties, who is liable?**

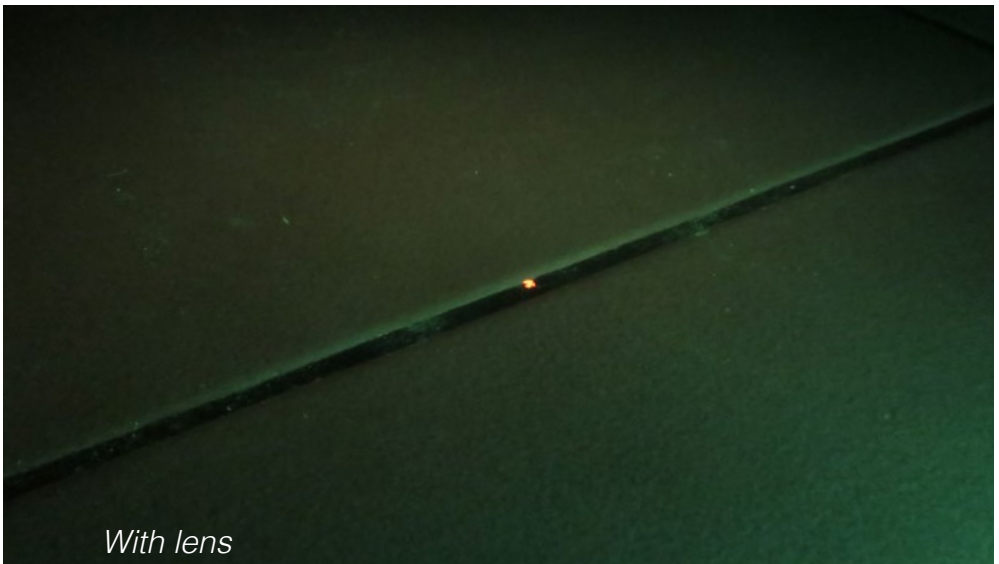
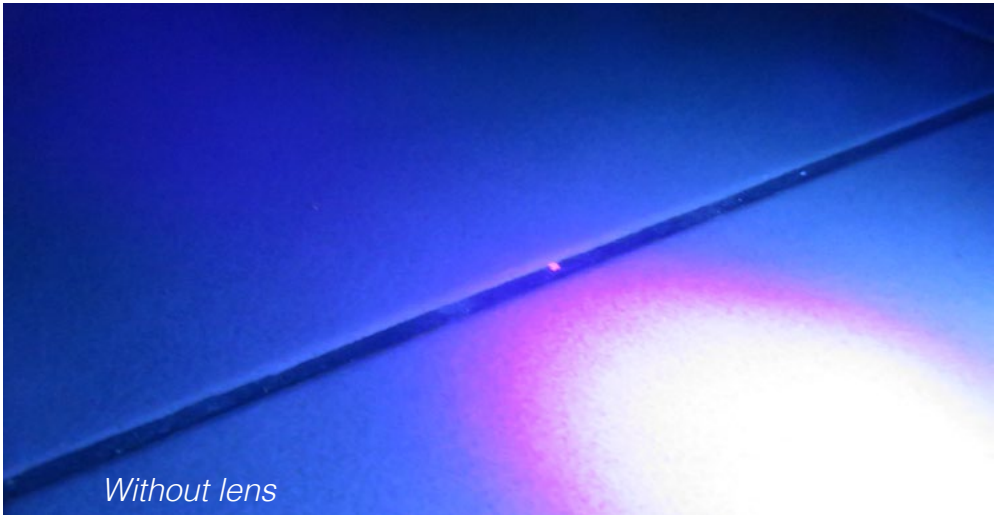
Pour the solved fluorescent dye on different places in the drains and let the rain do its work. This way you can see even after months who is liable.



***Colour division to search for leaks in roof gardens.  
Compartmentalize the roof garden into 7 colours.  
Do not forget to write this down.***

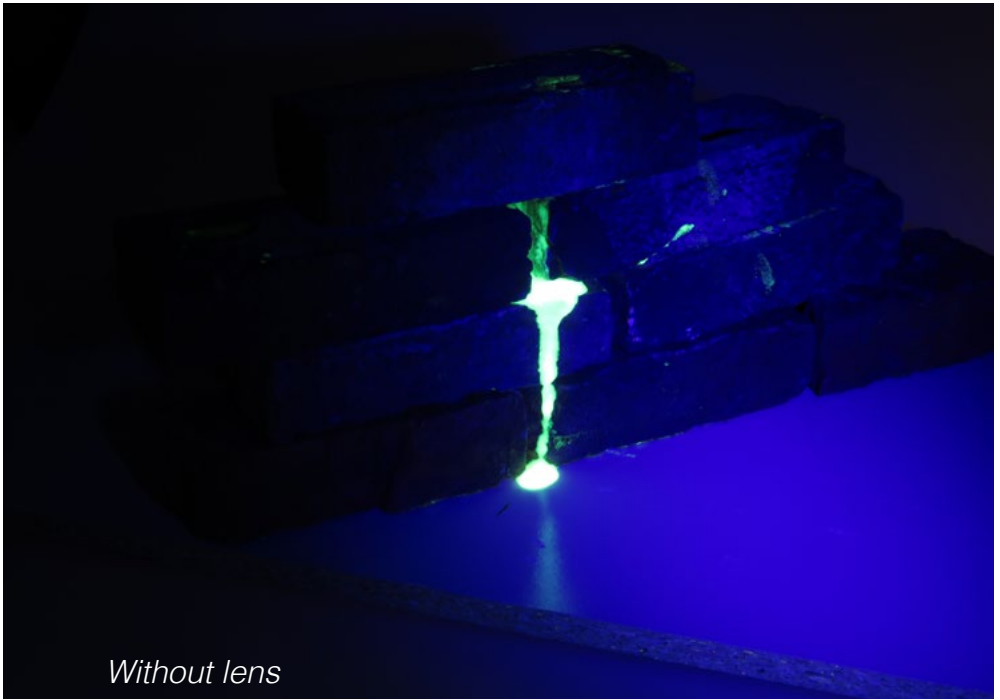
## Forensic extension set

Now there is a forensic extension set available which is easily connected to almost every digital camera. This is provided with a screw, brace, clamp and a special lens to document the proof of the found dye digitally. The special lens filters the blue light of the UV-flashlight so the fluorescent dye is digitally visible on the recordings (photographs).









*Without lens*



*With lens*



***„Reveal the source in the dark!”***

# Solutions for all your construction problems

webshop

[www.cruysbergghs.com](http://www.cruysbergghs.com)



**Cruysbergghs**

bvba

Chemical

Cruysbergghs Chemical bvba  
Heppensesteenweg 56  
3945 Ham - Belgium  
Tel: +32 11 72 71 66  
Fax: +32 11 72 71 51  
E-mail: [info@cruysbergghs.be](mailto:info@cruysbergghs.be)  
Website: [www.cruysbergghs.be](http://www.cruysbergghs.be)

© 2018 Cruysbergghs Chemical bvba - All rights reserved. All images are property of Cruysbergghs Chemical bvba. The logos of BASF and PCI are property of BASF Chemical Company. All information distributed through this document is for information purposes only, without adverse recognition, nor any other warranty than those resulting from the sale of our products, within the bounds of our terms and conditions. Users must always consult our last published technical data sheets; a copy of which is available upon request. The information indicated above is the result of a thorough study, previous data are hereby invalid. Test this product yourself and test whether it is satisfactory for your goals. We are not responsible for any misuse of our products or damage, nor do we guarantee if our products were not suitable for your particular purposes. Nobody has the right to give guarantees or guidelines in our name about this product, that are beyond the contents of this information sheet.

Version 1.3.1. - Check the website for the latest update of this brochure.